

Junkkari

Part of the MSK Group

SPARE PARTS GUIDE



SIMULTA

SEED COULTER

Junkkari
Part of the MSK Group

128810

The front seed couler for Simulta.
Compatible with models since 1987.



128820

The rear seed couler for Simulta.
Compatible with models since 1987.



12881

Front arm for Simulta seed couler. Compatible with models since 2004. Suitable also for older models with scraper V15157 and rear scraper V14868.



12882

Rear arm for Simulta seed couler. Compatible with models since 2004. Suitable also for older models with scraper V16214 and rear scraper V14868.



V15157

Scraper plate for Simulta front seed couler 128810. Compatible with models since 2004.



V16214

Scraper plate for Simulta rear seed couler 128820. Compatible with models since 2004.



SIMULTA

SEED COULTER

Junkkari
Part of the MSK Group

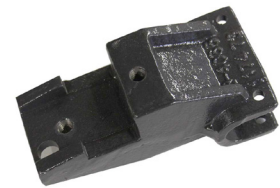
V14868

Rear scraper for seed coulters. Compatible for coulters 128810 and 128820 since 2004.



CT3406400

Cast iron fastener for Simulta seed couler. Compatible for models since 1987.



D40048157

Plastic bearing for seed couler. Need 2 pcs / couler.



D14818500

Spring for seed couler. 4x32x155 mm.



V161412

Disc for Simulta seed couler, includes bearings. Compatible for models since 1983. Also order protection cup 131324000.



V161413

Bearings and parts for attaching seed disc. Compatible for models since 1987. Compatible also for row marker disc with ball bearing.



SIMULTA

FERTILIZER COULTER

Junkkari
Part of the MSK Group

143620

Disc fertilizer coulters for front. Compatible for Simulta NL, KH, T and ST models since 1987.



143600

Disc fertilizer coulters for back. Compatible for Simulta NL, KH, T and ST models since 1987.



D30000486

Spring for Simulta disc fertilizer coulters.



14354

Fastener for disc fertilizer coulters.



D18253

Dust cover for all Simulta and Maestro models. Prevents soil from entering the pipe.



14967

Motion limiter. Prevents coulters from moving after impact.



SIMULTA

S-TINE FERTILIZER COULTER

137251

Simulta fertilizer coulters. Compatible for models since 1987.



D30000481

Spring for Simulta fertilizer coulters 137251.



137252

Tube for fertilizer coulters 137251.



13101

Coulter top for fertilizer coulters 137251.
Replaces coulters top 137265.



137249

Fastener for s-tine fertilizer coulters 137251.



D30119

Funnel for fertilizer and small seed box.



SIMULTA

SPARE PARTS

Junkkari
Part of the MSK Group

137970

Prime chain tensioner for Simulta T and ST models. Order also chain 137781 or 153812.



D14110

Spring for Simulta machinery and chain tensioner.



153812

Primary chain for Simulta ST. Compitable for models since 2002. Includes connector. Order also tensioners 137970.



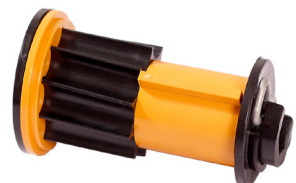
137781

Primary chain for Simulta T. Compitable also for ST models until 2001. Includes connector. Order also tensioners 137970.



V16570

Feeding roller for Simulta. Compitable also for small seed box and Maestro fertilizers 2005-2009.



137421

Tube for Simulta fertilizer coulters. Also for rear seed coulters.



SIMULTA

SPARE PARTS

16250

Drive clutch. Combtable for models since 2002. If machine don't have drive clutch as standard, limiter is also needed.



20612

Complete bottom flap.



D30000140

8mm harrow spike.



15182

10mm harrow spike.



D40538

Tramline clutch for Simulta. For 2012 and older models with white connector.



137426

Tube for front seed coulters.



MAESTRO

COULTER

Junkkari
Part of the MSK Group

17541

Rear coulter tube for Maestro and Maestro Plus.



17523

Front coulter tube for Maestro and Maestro Plus.



V20624

Coulter disc with bearing for older Maestro models. Includes disc, bearings and seal. Axle's diameter 25 mm. Replaces code 17245. Order also protection cup 21108.



V20670

Coulter disc with bearing for Maestro Plus and M. Order also dust protector 21095.



E34816

Big spring for coulter.



22674

Small spring for coulter. Replaces spring D14105.



MAESTRO

SPARE PARTS

Junkkari
Part of the MSK Group

D17967

Tramline clutch. For 2012 and older models with white connector.



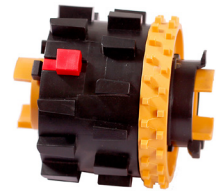
18050

750mm long tube for fertilizer.



V16580

Complete feeding roller for SMD and Maestro seed axle. For tramline clutch you need also feed roller 17974.



D18355

Tire and rim 7,5 x 16. Compitable for Maestro and Simulta ST since 2002.



20617

Complete wheel hub and axle.



18815

Reaction bar. Diameter 20mm.



MAESTRO

SPARE PARTS

Junkkari
Part of the MSK Group

18553

Complete plate for Maestro.



20792

Complete shutter for Maestro and SMTD.



S/Z782-006

Speed sensor.



S/F713-009

Hopper sensor.



SMTD

COULTER

36690

Front coulter for S-model with two tubes.



36680

Rear coulter for S-model with two tubes.



V36158

Disc for S-model with bearings. Order also cover 131324000.



36640

Front coulter for M-model with two tubes.



36650

Rear coulter for M-model with two tubes.



V20670

Disc for M-model with bearings. Order also cover 21095.



SMTD

SPARE PARTS

22964

Tramline clutch for SMTD.



31674

Harrow spike for SMTD.



22724

Ground wheel for SMD 2014-2020.



32485

Yellow dust cover for SMTD.



33019

Spring for S coulter. 4,5x200mm.



32401

Small spring for M coulter.
2,5x19,3x108mm.



31931

Big spring for M coulter. 7x45x400mm.



CHIPPERS

SPARE PARTS

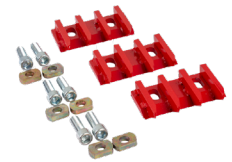
D56340142

Knife for HJ4 chipper. Need 3 pcs.
150x80x9mm.



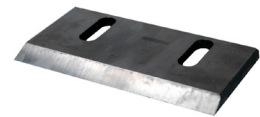
V445051

Brush wood knives for HJ4 chipper. Includes
knives and mounting parts.



D56340141

Knife for HJ170, HJ172, HJ5, HJ6 and
HJ200. Need 4 pcs. 200x100x10mm.



V434531

Brush wood knives for HJ170, HJ172 and HJ5
chipper. Includes knives and mounting parts.



D56133172

Knife for HJ10, HJ250, HJ252 and HJ260 chipper.
Need 4 pcs. 280x100x10mm.



V422301

Brush wood knives for HJ10, HJ250, HJ252
and HJ260 chipper. Includes knives and
mounting parts.



CHIPPERS

SPARE PARTS

42271

Knife for HJ261 and HJ262 chipper. Need 4 pcs.
350x100x10mm.



V422801

Brush wood knives for HJ261 and HJ262 chipper.
Includes knives and mounting parts.



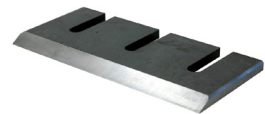
D56340141

Knife for HJ320. Need 8 pcs.
200x100x10mm.



D47009

Knife for HJ500 chipper. Need 4 pcs.
280x130x12mm.



V471100

Brush wood knife for HJ500 chipper disc. Need
2 pcs. Includes knife and mounting parts.



V472650

Brush wood knife for HJ500 chipper.
Chamber-installed. Need 1 pc.



NOTES

[illegible]

CONTACT

Spare parts orders to:

junkkarisales@msk.fi



Miika Koskela

Spare parts
Tel. 010 480 2206
miika.koskela@msk.fi



Ilari Keskinen

Service and Technical support
Tel. 010 480 2252
ilari.keskinen@msk.fi



Matilda Sironen

Marketing and after sales
Warranty
Tel. 010 480 2635
matilda.sironen@msk.fi